



UNITED WAY PROGRAMS



BACKPACK BUDDIES

In the Bemidji area, 1 in 5 children experience food insecurity and hunger. The Backpack Buddies program was developed to help ensure children in the Bemidji school district have access to nutritious, non-perishable and easy-to-prepare food at times when other resources are not available, such as weekends and school vacations. Community Partners: Bemidji School District (ISD #31), Sanford Health, North Country Food Bank, Lueken's Village Foods, and Marketplace Foods.



IMAGINATION LIBRARY

This book gifting program makes reading fun and exciting for local children. Each month a new, carefully selected book is mailed to children directly to their home, with no cost to the family. Children from birth until their fifth birthday are eligible for this free program in Beltrami County. Community Partners: Red Stu Breakfast Bar, Beltrami Electric Operation RoundUp, Friends of the Bemidji Public Library, and Friends of the Carnegie.



VOLUNTEER BEMIDJI

In partnership with area non-profits, for-profits, civic, and community organizations, this online tool allows local agencies to share volunteer and job opportunities, charitable agencies accepting household donations, community resources, and more. Visit VolunteerBemidji.org to see what needs are in our community, and sign up to be of service to others.



WHEELS TO WORK

Wheels to Work: Fueling Opportunities to Thrive is a United Way transportation program that assists local families with transportation and vehicle repairs to ensure they can get to work and receive needed services. Community Partners: Dondelinger GM, Northwest Minnesota Foundation, Northwest Technical College, Otto Bremer Foundation, and United Way Partner Agencies.



COATS FOR THE COMMUNITY

Each year donations of gently used, clean winter coats and outerwear for men, women, children and infants are collected. More than 3,000 cold-weather items are collected and distributed to our Bemidji neighbors to keep them warm and dry during the winter. Community Partners: Paul Bunyan Broadcasting's KZY95.5, KB101, Z99 and KBUN, Lueken's Village Foods, Dress Club Cleaners, and First Lutheran Church.



THANKSGIVING MEALS

Each Thanksgiving, meals are prepared and delivered to local families who would not have access to a delicious full meal without community support. This program is made possible through the support of volunteers who assist in preparing and delivering meals. Community Partners: Bar 209, Lueken's Village Foods, and United Way Partner Agencies.



HOLIDAY GIFTS FOR KIDS

Each December children get to experience the joy of the holiday thanks to the generosity of our community. Parents or legal guardians register for the Holiday Gifts for Kids program and have the opportunity to choose a gift for their child on distribution day. In addition, each family receives a board game to enjoy together. Community Partners: RP Broadcasting's Babe County 98.3 and Mix 103.7, Sanford Center, First National Bank Bemidji, and Bemidji Ambulance.



BEYOND THE FUNDING

The United Way provides support with problem solving, advocacy, marketing, fundraising, volunteer connections, and strategic services to help our local non-profit partner agencies serve more people. Community Partners: Otto Bremer Trust.



GIVE WHERE YOU LIVE



Our Mission: To transform lives in our community by uniting people and organizations to maximize donor impact.



Thank you to Amity Graphics for the printing sponsorship

2023 UNITED WAY BOARD OF DIRECTORS

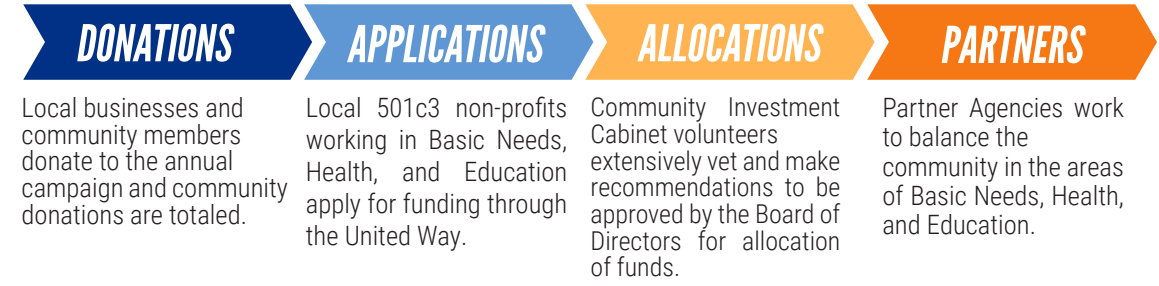
- Rob Belanger, President**
Community Member
- Justin Kaney, Vice President**
Bemidji Brewing
- Amber Coquette, Treasurer**
Karvako, P.A.
- Sarah Hokuf, At Large**
Evolve Creative
- Andrea Kingbird, At Large**
City of Bemidji
- Drew Hildenbrand**
ISD #31
- Arlene Hogquist**
Beltrami Electric Cooperative
- Nina Johnson**
Bemidji State University
- Doug Jones**
ServiceMaster
- Brady Laudon**
Visit Bemidji
- Jeff Lind**
Beltrami County
- Lori Lundberg**
Northwoods Lumber
- Jason Rylander**
Bernick's of Bemidji
- Megan Steigauf**
Sanford Health

2023 COMMUNITY INVESTMENT CABINET

- Jordan Anderson**
Ultima Bank Minnesota
- Sharon Beaudreau**
Sanford Health
- Nikki Brink**
Community Member
- Amber Coquette**
Karvako, P.A.
- Georgia Del Favero**
First National Bank Bemidji
- Laura Engan**
Greater Bemidji
- Gwenia Fiskevold Gould**
BSU Alumni & Foundation
- Megan Hill**
Bemidji Brewing
- Christine Maxwell**
Northland Fishing Tackle
- Kyle McMartin**
ISD #31
- Lisa Miller**
Sanford Health
- Gail Reff**
Community Member
- Cathy Schultz**
Independent Contractor
- Tyler Smith**
Security Bank USA
- Abbey Swanson**
Miller McDonald, Inc.
- Tiffany Vickaryous-Hubbard**
Community Member

GIVE WHERE YOU LIVE

HOW DONOR DOLLARS LEAD TO CHANGE



United Way 2023-2024 PARTNER AGENCIES

BASIC NEEDS	HEALTH	EDUCATION
BEMIDJI COMMUNITY FOOD SHELF 	LSS MEALS ON WHEELS 	ADULT DAY SERVICES
CHURCHES UNITED 	NORTH COUNTRY FOOD BANK 	BEMIDJI EARLY CHILDHOOD COLLABORATIVE
COMMUNITY RESOURCE CONNECTIONS 	NORTHWOODS BATTERED WOMEN'S SHELTER 	BOYS & GIRLS CLUB OF BEMIDJI AREA
COMMUNITY TABLE 	ST. VINCENT DE PAUL 	HEADWATERS SCIENCE CENTER
EVERGREEN YOUTH & FAMILY SERVICES 	SUPPORT WITHIN REACH 	PEACEMAKER RESOURCES
LEGAL SERVICES OF NW MN 	VILLAGE OF HOPE 	READING CORPS SERVMINNESOTA
		VOYAGEURS AREA COUNCIL BOY SCOUTS

HOW WE HELP

OUR PARTNER AGENCIES

GRANT FUNDING

The United Way Community Campaign raises funds for local non-profits that work on Basic Needs, Health, and Education. Your gift is entrusted into the capable hands of trained community volunteers, called the Community Investment Cabinet, who work together to carefully invest funds into local programs and initiatives that achieve the greatest impact and create opportunities for a better life.

Additional funding the United Way of Bemidji Area facilitates includes: Community Response Funding, Child Abuse Prevention Funding, Suicide Prevention Funding, and Beltrami County Emergency Food & Shelter Grant Funding.

COMMUNITY INITIATIVES

United Way works with our Partner Agencies to solve collaborative issues the agencies are facing. United Way staff serve on various boards, committees and community initiative groups to help solve community problems and support more local families.

Our most recent example is the Wheels to Work program. Wheels to Work supports families with transportation and vehicle repairs by partnering with Dondelinger GM and Northwest Technical College. Dondelinger GM provides free Car Care Clinics, which include oil changes, tire rotations, and safety inspections. Immediate safety repairs are covered through the program by utilizing Dondelinger GM and Northwest Technical College technicians. Since the launch of the program, Wheels to Work has served 114 families in our area.

UNITED WAY AFFINITY GROUPS

United Way hosts a variety of Affinity Groups to engage community-minded individuals in opportunities to network, raise funds, advocate, and MAKE AN IMPACT within our community.

WOMEN UNITED



LINC (LEAD. IMPACT. NETWORK. CHANGE.)



STUDENT UNITED WAY

